



OUTWOOD NEWS

**OUTWOOD
NEWS**

**COPY DATE
NOVEMBER**

**Friday
15th October**

*Late copy cannot
be inserted without
prior agreement.*



Please submit
copy to:
anne.morle
@outwood.org

OCTOBER 2021

- ✓ Mot's
- ✓ Servicing
- ✓ Cambelts
- ✓ Diagnostics
- ✓ Clutches
- ✓ Batteries
- ✓ Tyres
- ✓ Exhausts
- ✓ Brakes
- ✓ Air con. etc.

Windmill Garage

Outwood

A friendly, trustworthy, family run business which has been built upon recommendation since 1966.

For more information...
Please check out our website or give us a call.



All work is carried out in-house

Good Garage Scheme Member Since 2007



01342 842132
www.windmill-garage.co.uk
Outwood Common, Outwood, Surrey, RH1 5PW



FOR YOU AND YOUR FAMILY

- Wills and power of attorney
- Trusts and estate administration
- Buying and selling property
- Divorce and relationship breakdowns
- Resolving disputes
- Managing your business

It can be tricky when you are making major decisions in your life to know where to start. Providing legal advice is about understanding your perspective and exploring your concerns to help find the right solution for you.

harrops-hepburn.co.uk 01883 723712
Redhill | [Oxtd](#) | Wimbledon | Teddington | Woking | Camberley

HH HARROPS & HEPBURN SOLICITORS
Part of the Morrisons Group



OUR VILLAGE SHOW

I would like to thank all of you who came to the Show this year. I will start with the Show Committee (a subcommittee of the Village Hall and the Parish Council), nothing could have happened without you!

On Wednesday the 1st the Outwood Volunteers put up the 'No Parking' notices and the tape opposite the Hall, meanwhile the ladies of the WI were busy making cakes for the Teas.

My thanks to both teams, to Sandra for updating the banners, to Colin who helped me put them up, and to Anne who did a great job putting the Show in the Outwood News.



The Big Day started with the usual juggling act. Lots of people asked about tables, and fortunately we had plenty thanks to Jim Broadbent and Pam who collected loads from Centenary Hall. Thanks also to Bill Morle and his gang on the barbecue (who helped with the big pong by resetting the sewage pumps for us - one had packed up completely but the other pumped down the water!)



Thanks to so many of you who made the day possible. Two real heroes on the day were Jo Barber and her team doing the Teas, and Colin and Emma who manned the Welly Wanging. I hope I'm right in saying Emma walked four miles measuring and retrieving boots, and at 4.15pm there was still a queue when she had to call a halt!

Finally, thanks to Dame Judi for presenting all the prizes for the Horticultural Show. I did promise her no speeches!

With love to you all, David

CHURCH NEWS

Rector's Ramblings

In my letter last month I was talking about the circle of life and how, as the earth circles round the sun, the seasons change. Summer turns to Autumn, Autumn to Winter and Winter to Spring. This month of October is when we become very aware of summer turning to autumn as the leaves change colour and fall. Unless of course you live in Australia, as my daughter Sarah does, where the seasons are the other way round and at this time of the year winter is turning to spring.



I've never been to Australia though I hope to one day – definitely will if my daughter stays there, “down under” as they say. We can't help thinking of Australia as being below because we are so conditioned to seeing maps or globes with north at the top and south at the bottom but in space there is no up or down – otherwise people in Australia would be walking around upside down! When astronauts look down at the earth from space, depending on where they are in relation to the earth, they would at different times see Europe, Australia, India and America “at the top”. Maps and globes are only designed that way round because they were first drawn by and for European explorers who chose to put Europe at the top. If the first world map makers had come from Australia the chances are that are maps and globes would be the other way up.

The earth not only circles round the sun once a year it also circles round itself once a day. It rotates on a North South axis, but it is only for the reasons I've described that we think of North at the top. What this means is that when we look at the sun and the moon and the stars we are just as much looking *up* at them as we are looking *down* at them – or simply looking out at them. All three ways are just as true!

Sometimes I like to lie on my back on the grass at night looking out at the stars and make a conscious effort not to think of myself looking up, but imagine myself looking down. I find it an amazing feeling realising that it is only gravity stopping me falling down into the abyss below! It's a whole new way of looking at things. And it's always good to think of new ways of looking at things. Changing the way you look at things changes the way you think about things and changing the way you think about things changes how those things affect you – be it a problem, a sadness, a worry, a fear or hope.

CHURCH NEWS

I was given a book at Christmas. It's called *The Boy, the Mole, the Fox and the Horse* by Charlie Mackesy. It's not a long book and it's the sort of book you dip into and read what's on the page you've opened it at. I thought of it as I was writing this letter and the page on which I opened it said this:

"We have such a long way to go," said the boy. "Yes, but look how far we've come." said the horse

So remember: there's always another way to look at things.

With love and prayers

Nicholas

Revd Nicholas Calver

The Rectory, 5 The Acorns, Smallfield RH6 9QJ

Email: nicholas.calver@btinternet.com

Tel: 01342 842224

It's time for another

Christmas Tree Festival

Saturday & Sunday 11th/12th December

St. John the Baptist Church, Outwood

You will be supplied with a five foot tree, in the Church, to be decorated on Friday 10th December, and the display will be open for most of the week- end, alongside the Christmas Fair on Saturday 11th, and accompanied throughout by festive refreshments.

All proceeds to the Church general fund

The undecorated trees will be for sale at the end of the festival, so even if you aren't decorating one, you may like to reserve one for your family celebrations.

PLEASE help us to make the festival a success.

Any queries, or to book your tree, please email Helen on winterhelen@icloud.com

or phone 01342 842231 / 07774 799140



MR Computing Ltd



The computer repair shop that comes to you at an agreed time/day, no waiting around and no need to transport your IT equipment.

- **NO FIX NO FEE**
- **Visiting computer/IT support for home & office**
- **New computer supply & setup to be familiar**
 - **Reliable wireless range improvement**
- **Computer speed up, repairs, data recovery**
 - **Remote support**



Call: 01342 349109 / 0800 6129534

Email: office@mrcomputing.net

www.mrcomputing.net

Reviews: [fb.com/mrcomputingltd/reviews](https://www.facebook.com/mrcomputingltd/reviews)

Outside In Locksmiths

Available 24 Hours

0800 772 39 72

Domestic, Commercial, Landlord.

Lock Outs, New Locks,
Lock Repairs.

Wooden, Upvc, Composite
and Aluminium doors locks
repaired.

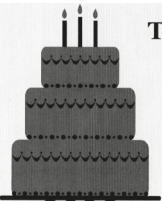
Fully Insured.

Free Quotes.



checkatrade

outsideinlocksmiths.co.uk



The Pink Cake Company

tiered wedding cakes
cupcake towers
cakes with edible images
feature cakes
afternoon tea cakes



lynne.messenger@hotmail.co.uk
07780 705961

WANT TO ADVERTISE IN OUTWOOD NEWS?

This space is just £50 p.a.
- only £5 per edition!

contact

John Mankelov: **01342 842764**

or

Anne Morle: **01342 843336**

D C Read Builders & Landscapers



'Quality Workmanship'

01342 843023

info@dcreadbuilders.vpweb.co.uk
www.dcreadbuilders.co.uk

07706 467803



ROYAL BRITISH LEGION

Outwood Branch

WE WILL REMEMBER THEM

POPPY LUNCH

LLOYD HALL

AFTER THE CHURCH REMEMBRANCE SERVICE

SUNDAY 14TH NOVEMBER

12.30 for 1.00pm

£20.00

Cash Bar and Raffle

ALL WELCOME

Tickets available from:

Caroline Durance - 07703 342921

Email: carolinedurance@me.com

OUTWOOD CHRISTMAS ADVENT WINDOWS

Its approaching that time of year again!

A few villagers have expressed a wish to have the Advent Windows again so I am starting organising a little sooner this year!

If you would like to be involved in having a window display please email me and I will add your name to the list. The idea is you unveil, on a designated day, a little display in your window/ porch/ or even lights around your house! Hopefully this year we can be a little more adventurous (covid permitting) and arrange some fundraising at the same time. Perhaps selling mulled wine and mince pies whilst unveiling your window display!?

I hope there will be lots of you who would like to be involved so please do get in touch.

Katie

kwhols@yahoo.co.uk

SMALLFIELD SUPPLIES

INDEPENDENT HARDWARE & GENERAL STORE

For your home, garden and DIY requirements

OPENING TIMES

Monday CLOSED

Tuesday to Friday 9.30am - 16.00pm

Saturday 9.30am - 12.00pm

FREE PARKING

TELEPHONE: 01342 843320

2 Woodbridge, Chapel Road, Smallfield, Surrey RH6 9NW

*Amie
Electro*

Amie Electro the friendly and professional Electrician you can trust.
Residential and commercial, single phase and three phase.
Complete and partial rewires.

Fusebox replacement and upgrades.

Inspection, testing, certification, maintenance and more!



Susanne Heldwein trading as
Amie Electro. Thorough,
methodical and solution
oriented work attitude. Active, positive,

straightforward and ethical approach. All works
carried out personally.. taking good care of
your property. Offering the full range of
domestic and commercial electrical services.

Qualified with distinction as electrical installer
(Munich, Bavaria, West Germany 1990). Established
in the UK in 2011. City & Guilds Level 3 Diploma
in Electrical Installations.

Part P registered.

*Domestic &
Commercial*

*Part P
registered*

01342 888654 / 07951 179146

mail@amie-electro.co.uk

Find the reviews

@ www.amie-electro.co.uk

Single Phase & Three Phase

*Amie
Electro*



SEPTEMBER REPORT

As we all try to return to a sense of “normality”, our Outwood WI group are pleased to have returned to its home at the Lloyd Hall for its regular monthly meetings.

At this month’s meeting we were able to welcome our first live visiting speaker in eighteen months and it was a real treat to share our recent experiences through the discussion that followed the presentation. Our speaker, Bunty Dann, is a psychotherapist who has worked with many vulnerable people in her career: the homeless, victims of violence, those whose depression had led to attempts at suicide.

Bunty’s work has led her to make some fascinating comparisons between the ways that men and women handle life and its stress levels. From amusing anecdotes of men’s judgements of women’s driving, to the plaintive complaints from women that men are unable to listen effectively during an argument, we were all able to recognise issues from our own lives and relationships. We also learned some fascinating facts: men have better distance judgement than women, while women have finer judgements of colour variations. Most importantly, the two sexes handle emotions differently and we need to learn how to communicate effectively by taking these differences into account.



Pamela Shaw, Patricia Sutton, Norah Wretham, Anne Morle and Barbara Garton display the cards used by Bunty Dann in her talk about contributors to good mental health: community, emotional connection, control, respect, meaning and purpose

At our September meeting we heard from our president, Caroline Durance, about the latest appeal from Stripey Stork – a charity we support regularly – and we are striving to contribute to the project helping to support refugee Afghan mothers and children by sending clothes, toys and personal items.

We are so lucky to be part of a WI group where a sense of community (both local and global) are very strong indeed.

For next month’s meeting on 5th October at 2.30pm we move from learning to laughter, as our play reading group will be treating us to a presentation “Whose Wedding Is It Anyway?” Do join us for some lighthearted entertainment!



Connecting the
Arts and Crafts
community

UKCraftFairs.com



BABYSITTING

Reliable teenage
girl from
Outwood
available for
babysitting.

Please contact Keeva Martin
07821 736059
keeva@family-martin.co.uk

Local teenager looking for;

Dog Walking, Dog Sitting,
Baby Sitting, House Sitting,
Gardening/Lawn Mowing,
Car Washing
and any other small jobs.

Please contact Patrick Smith
patchgymnast@aol.com
07884 121110

PAT CARTER

For all your electrical work

Tel: 01342 843883
Mobile: 07711 478890

Ballast • Ceramic Tiles
Dulux Paint • Fascia • Fencing
Gardening Products • Guttering
Household Goods • Insulation • MDF
Plywood • Power Tools • Roof Windows
Sand & Cement • Timber • Underground Plumbing • uPVC
All your needs under one roof!

MITCHELLS
BUILDING CENTRE

1-9 Station Road, Horley, Surrey, RH6 9HW
www.mitchellsofhorley.co.uk

Telephone 01293 820890

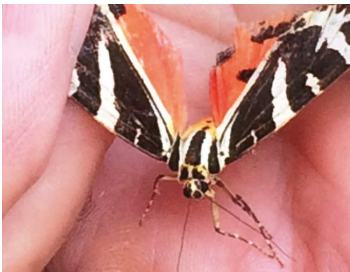
Monday-Friday 7.30am-5.30pm • Saturday 8.00am-4.00pm

FREE Local Delivery . FREE Parking

YOUR LOCAL TRADE & D.I.Y CENTRE

NATURE WATCH

The weather experts tell us that the summer this year has been on average warmer than the long term norm. However, whilst that may be true for the country as a whole, and you will have noted that Scotland has often been warmer than the south east, but locally I think most of us will remember the summer of 2021 as rather dull and cloudy, at times windy and sometimes a little nippy. However things improved at the end of August and the weather was good for the Outwood Show. As the sun reappeared and the temperatures rose so did the butterflies, dragonflies and the bees, wasps and hornets. Honey bees had been noticeable by their absence in early summer but were busy in large numbers particularly around garden flowers such as Michaelmas daisies and other single flowers where they find it easier to collect pollen and nectar. Butterflies were again out in force and included large, small and green veined whites, peacocks, gatekeepers and second broods of common blues and orange tips. Most insects are attracted by sweet fruits and our ever productive Victoria plum was like a magnet to tortoiseshell butterflies with as many as a dozen or more at a time fluttering round and feeding on fallen fruit together with wasps which were much fewer in number than in past years. By the beginning of September swallows were starting to gather around the back fields clearly feeding themselves on flying insects before their long return flight to Africa and by the end of the second week they were gone. It has been noticeable that some trees seem to be shedding leaves earlier than usual. With ash trees it is almost certainly because of the stress caused by the ash die back fungus and a walk through the National Trust woodlands around the village will give some idea of just how many trees are effected - each of which is marked with a bright coloured spot. Another tree species which has been losing leaves this year are sapling elm trees which had grown to around fifteen metres and I had a hope that they may have started to become immune to Dutch Elm disease but in the last couple of months leaves have yellowed and been shed.



A rare sighting of a Jersey Tiger moth was reported by Linda and Paul Pitts who spotted one whilst enjoying a sunny afternoon in their garden in early September - they were even quick enough to get a really good photograph. The Jersey Tiger moth (*Euplagia quadripunctaria*), which is rated as the most attractive of the tiger moths has a wingspan of 45 -60mms but is well camouflaged with the upper wings bearing broad black and cream stripes and the under-wings are bright orange with

black splashes. They can be seen flying July to September and between May and September their larvae feed on nettles, raspberries, dandelion, white dead nettle and hemp agrimony. In the UK these moths are concentrated in south Devon but have been sighted along the south coast as far as north Kent and east London in recent years as temperatures rise due to climate change.

Other reports over the last two months include one from Sheila Ferguson who spotted a badger when dog walking over towards Burstow Park Farm. Also, in the third week of September Yvonne and Tony Cooper reported seeing groups of up to thirty small birds flying around their garden hedges and from the description of their looping flight they were goldfinches - their delightful collective noun "a chime".

Mike F Johnson



**Home or Office
Desktop – Laptop – Network
Specialists**

We Come to You!

On-site or pickup and return service

Fixed price repairs - 1000+ Clients
25 yrs+ experience - No Fix No Fee

Call Steve or Caroline

01342 834267

07771 666759

enquiries@sensiblepc solutions.co.uk

www.SensiblepcSolutions.co.uk

**KEEPING OUTWOOD
BUG FREE FOR 16 YEARS**

ANTIQUE FURNITURE RESTORATION

**ALL ASPECTS OF
FURNITURE REPAIRS AND
POLISHING UNDERTAKEN**

**INCLUDING MODERN
FURNITURE**

30 YEARS' EXPERIENCE

**FREE ADVICE AND
ESTIMATES GIVEN - CALL**

STEVE PEACOCK

01883 743879

STONEMAN FUNERAL SERVICE

Caring Dignified Professional

Fifth Generation Family Funeral Director Est 1865

Prepaid Funeral Plans • Private Chapels of Rest • Home Visits

24Hr Emergency Service

INCORPORATING: GALYER & CO: 45-47 HIGH STREET GODSTONE

TEL: 01883 740123 Godstone

HEAD OFFICE & FUNERAL HOME: DORAN COURT, REIGATE ROAD, REDHILL

TEL: 01737 763456 Redhill

MEMORIAL OFFICE & SHOWROOMS FUNERAL ARRANGEMENT ROOM: 49 BELL STREET, REIGATE

TEL: 01737 243164 Reigate



For free advice and guidance on Registration or the Coroner's procedure

FREEPHONE 0500 474 444





CHARTERED DESIGNERS PROJECT MANAGERS

Architecture ❖ Interior Design
Engineering ❖ Surveying
Town Planning ❖ Project Management

**For all aspects of building
design and construction**

Contact Bill Morle FCSD MFPWS

01342 843336

email: bill@a-bdesigns.co.uk



Cheeld Wheeler & Co

CHARTERED CERTIFIED ACCOUNTANTS



Taxation & Accountancy services for:

- Business Start Ups
- Limited Companies
- Individuals
- Partnerships

Call: **01737 224891**

www.cheeldwheelerandco.co.uk

Helgaz Flowers

Modern & Traditional Floristry
Flowers to suit all budgets
Weddings, Funerals
and all other occasions

01342 843777

helgazflowers@gmail.com

www.helgazflowers.co.uk

Please like us on 

1b Wheelers Lane, Smallfield, Surrey RH6 9PT



OUTWOOD NEWS

This space is just £140 p.a.
- only £14 per edition!

For more information and to check availability

please contact

John Mankelow:

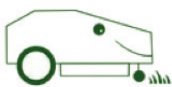
01342 842764

or

Anne Morle:

01342 843336

anne.morle@outwood.org



FROMAINT PEACEFUL GARDENS

Would you like your grass cut every day?

Large or small garden

We can help

Unique automated grass cutting service

From only £9/week

Free quote & garden survey

Garden Maintenance professional
Robotic lawnmower specialist
Fully insured

Contact Bob Fromaint

M: 07828 304923

E: fromaint@gmail.com

W: www.fromaint.co.uk

50% OFF 1st Month Grass Cut

Quote Outwood News

*Credit cards
accepted*

HOMWOOD



HEATING

PLUMBING & BATHROOMS

- Plumbing • Boiler • Bathroom – Installations & Maintenance
- Accessible Bathroom Adaptions • Wet Rooms • Cloakrooms
- Electrics, Plastering, Carpentry, Tiling, Decorating & General Maintenance
- Boiler Service • Landlord Gas Safety Inspections • Powerflushing

FREE ESTIMATES & ADVICE call 07850 373955 or 01737 823888

www.homewoodheating.co.uk



IN AID OF
ST CATHERINE'S
HOSPICE

Registered charity number 281342
and as a company in England no 1525404



Burstow Friends of St. Catherine's Hospice

A Night At the Races

Saturday 9th October Lloyd Hall, Brickfield Road.

Hold your horses!

This event has been rescheduled for **19th March 2022**

Unwanted Scarves Needed

If you have unwanted scarves (any type)
we would be grateful to receive them.



Please contact Angie, 01342 843718 / challis668@btinternet.com

LLOYD HALL

AFTERNOON TEA with music and fun

LLOYD HALL

Third Tuesday in October

19th October

3.00 to 4.30 pm

£4 including refreshments

*Come and chat with friends, some singalong,
and hear a poem or two.*





OUTWOOD PARISH COUNCIL



We would like to offer A BIG THANK YOU to David Crittell & the OVS team for working so hard to create a such a wonderful Village Show this year!



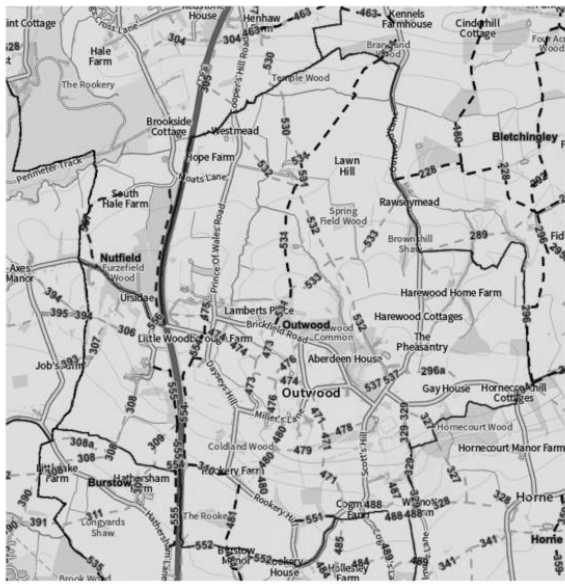
Bus 315 – don't forget to use it or we might lose it. Please check page 18 for more details.

The National Trust Community Orchard Up near the windmill there is an orchard of a variety of fruit trees. These were planted, several several years ago, by people in this community. The resulting fruit is for anyone, not just those that that planted the trees. Please feel free to take some, just not when there are animals, grazing, in the field.

Community Speed Watch is looking for more volunteers. Please see Nigel's separate insert for more details.

Local Footpaths

We are very grateful to the local residents who offered to look after a local footpath or bridleway when they visited our table at the Show. There are still plenty of footpaths available to adopt. We only ask volunteers to clear litter and report any problems with vegetation, access and signage to us. Please contact one of the Parish Councillors if you'd like to get involved.



NEXT MEETING: Tuesday 12th October at 8pm in the Church Room
Members of the public are invited to attend our meetings

For more detailed meeting reports and any current planning applications please visit the website at www.outwood.org and click on Parish Council.

CONTACT DETAILS

PARISH COUNCIL MEETINGS

Meetings are held each month except August and December

PARISH COUNCILLORS

Mary Baldock	Planning & National Trust	baldock.mary@googlemail.com	842358
Barry Gosling	Planning & Lloyd Hall	bagosling651@gmail.com	844105
Jane Howard	Chair - Footpaths & Bridleways	janeweston899@btinternet.com	842456
Nick Wyrer	Vice Chair - Roads & Verges, Wells Field	nickwyrer56@gmail.com	841664
Rosie Yeldham	Community Matters	rosie.yeldham@outwood.org	844642

PARISH CLERK

Lucinda Charlesworth Email: parish.clerk@outwood.org 01342 843800
Brightleigh House, Millers Lane, Outwood, Surrey RH1 5PZ

DISTRICT COUNCILLORS

Kevin Bourne	07963 833154
Mick Gillman	01342 893233
Colin White	01342 893010

COUNTY COUNCILLOR

Chris Farr TBC

TANDRIDGE DISTRICT COUNCIL

General 01883 722000

Noise, dangerous structures,
pest control, pollution, flooding,
tree enforcement etc.

Amenity Services 0800 7834843

Abandoned cars, flytipping,
graffiti or vandalism.

Rubbish collection BIFFA 01342 837346

Removal of unwanted vehicle 01883 732998

www.tandridge.gov.uk

SURREY COUNTY COUNCIL

General 03456 009009

Pot Holes 0300 200 1003

Verge Cutting 01342 837666

www.surreycc.gov.uk

MEMBER OF PARLIAMENT

Claire Coutinho

Email: claire.coutinho.mp@parliament.uk

House of Commons (Direct Line) 020 7219 7643

Constituency Office Oxted 01883 715782

MEP

Daniel Hannan 020 7222 9000

GATWICK AIRPORT NOISE

Automated line 01293 311568

Flight tracker on Gatwick Airport website

REDHILL AERODROME NOISELINE

Please copy any response received 01737 888123
using this Noiseline to the Parish Clerk

LLOYD HALL

Booking Secretary

Jeremy Charlesworth 07435 882640

Email: lloydhall.outwood@hotmail.co.uk

Management Committee Secretary

Jane Forbat 01342 842834

Email: lhmc@lloydhall.org

NATIONAL TRUST

Harewoods Estate Office 01342 843225

Lead Ranger - Mark Richards - 07770 887679

Area Ranger - Eleanor Yoxhall - 07769 885991

www.nationaltrust.org.uk

NEIGHBOURHOOD WATCH

Jo-Anne Barber 07967 157402

Email: jombarber@hotmail.com

POLICE

Emergency Attendance 999

Report non-urgent incidents 101

Crime Prevention Advice

Mark Howells

Email: mark.howells@surrey.pnn.police.uk

Neighbourhood Specialist Officer (NSO)

PC 40300 Kevin Stimson

Email: kevin.stimson@surrey.pnn.police.uk

PCSO 12437 Conrad Cheeseman

Email: Cheeseman12437@surrey.pnn.police.uk

PCSO 13539 Stuart Wren

Email: stuart.wren@surrey.pnn.police.uk

USEFUL NUMBERS:

PEST CONTROL (Rats, wasps etc.)

Balcombe Pest Control 01444 811916

BIFFA Special Collections 01883 712333
(Option 2)

Fridges, Freezers, Furniture etc.

OUTWOOD'S PUBLIC TRANSPORT

**Note: 315 stops (and drops off)
anywhere in the village when hailed.
For simplicity the times are given for
Millers Lane.**

**Please make timing adjustments
for stopping elsewhere.**

315 Cruiser Service

Times to and from Redhill, but this bus also
goes to Dormansland via Smallfield

Monday to Friday only

Leaves Millers Lane	07.48
	10.25
	13.50

The 10.25 and 13.50 buses also go
to East Surrey Hospital via Redhill.
Buses leave the hospital at 12.15
and 17.05 to return to Outwood.

Leaves Redhill Bus Station	09.00
	12.25
	17.15
<i>Fridays only</i>	15.37

On school days there are also
buses from Millers Lane at 07.45

East Surrey Rural Transport ESRTP

Bookings and information: 01883 701270

Website: www.rtp@esrtp.org.uk

*Information provided by
Outwood Parish Council E&OE*

OFFICE OF THE POLICE & CRIME COMMISSIONER FOR SURREY

**Lisa Townsend
Police and Crime Commissioner**



COMMUNITY SPEEDWATCH

Several outings with the speedgun
since the last Outwood News have
been worthwhile for our volunteers
and include a new record high speed
of 83mph logged on Dayseys Hill. All
details have gone to Surrey Police.

Outwood Speedwatch started in
2006, following a village survey
approved by the Parish Council of
the day and speed monitoring on
Outwood Common by Surrey Police.
Since that time, I have been the
co-ordinator for Outwood with the
police, council and, most importantly,
your volunteers.

After 15 years, I am 'retiring' at the
end of 2021 so, in addition to some
extra pairs of eyes, we also need
somebody new to lead our group,
ideally with some computer skills that
I don't possess. I will help ease you
in and may still be a volunteer.

Please either contact me or the
Parish Council if you want to help us
continue.

KNOW YOUR LIMITS ...

Nigel Shaw 842743

St John the Baptist, Outwood

Services in October

Sunday 3 October

11 am Holy Communion

Sunday 10 October

11 am Holy Communion

Sunday 17 October

11 am Morning Worship

Sunday 24 October

11 am Holy Communion

Sunday 31 October

11 am Morning Worship

In addition to the above, online Sunday services continue every week and can be found on the benefice website: www.windmillchurches.co.uk

Rector: Revd Nicholas Calver

Tel: 01342 842224 Email: nicholas.calver@btinternet.com

St John the Baptist, Outwood is part of the Windmill United Benefice with St Mary the Virgin, Horne and St Bartholomew, Burstow

Visit: www.windmillchurches.co.uk

DIARY OF EVENTS

*** Events planned subject to current Government guidance. ***

OCTOBER

- Tuesday 5th WI MEETING - "Whose Wedding Is It Anyway?"
2.30pm - Lloyd Hall
- Tuesday 12th PARISH COUNCIL MEETING
8.00pm - Church Room
- Tuesday 19th AFTERNOON TEA WITH MUSIC AND FUN
3.00-4.30pm - Lloyd Hall

NOVEMBER

- Sunday 14th ORBL REMEMBRANCE SERVICE in Church
POPPY LUNCH
12.30 for 1.00pm - Lloyd Hall
- Friday 19th OUTWOOD HORT. SOC. AGM
PIE & MASH SUPPER
7.30pm - Lloyd Hall
- Saturday 27th AN EVENING WITH JOE STILGOE
7.30pm - Lloyd Hall

DECEMBER

- Saturday 11th St JOHN'S CHURCH FAIR
CHRISTMAS TREE FESTIVAL
- Sunday 12th CHRISTMAS TREE FESTIVAL
- Friday 17th SHOESTRING PRODUCTIONS
- Saturday 18th "KING ARTHUR - THE PANTO"
- Sunday 19th

OUTWOOD VILLAGE WEBSITE
www.outwood.org

The website Diary page, maintained by Outwood News, lists all village events (*of which we are aware*) taking place up to a year in advance.

Why not take a look to avoid a clash of dates!

LLOYD HALL

AN EVENING WITH JOE STILGOE

SATURDAY 27th NOVEMBER 2021

Doors open 7.30pm



EVENT SOLD OUT

*Tickets £30 in advance, to include main course and dessert
plus table snacks on arrival*

Cash Bar

Love Lloyd Hall 50/50 Club

July 2021 Results

1st Prize	Ticket no: 14	£67.50
2nd Prize	Ticket no: 23	£40.50
3rd Prize	Ticket no: 27	£27.00

September 2021 Results

1st Prize	Ticket no: 31	£67.50
2nd Prize	Ticket no: 32	£40.50
3rd Prize	Ticket no: 30	£27.00

For details of the 50/50 club contact Robin Kirkland - robin@boralo.com

Shoestring
PRODUCTIONS

"KING ARTHUR - THE PANTO"

We shall start rehearsing on Fridays at 7.30pm.

We could do with some chorus members, young or old!

Show dates 17th, 18th, and 19th December.

Anyone interested in helping, please come forward!

Please ring me on 01342 843661

Many thanks,

Sandra

GARDEN MAINTENANCE

We are a friendly and reliable family run business, specialising in complete all year round garden maintenance.

- GRASS CUTTING
- WEEDING
- HEDGE CUTTING AND SHAPING
- SEASONAL TIDY-UPS
- JUNGLE CLEARANCE
- REGULAR VISITS
- MAINTENANCE PLANS
- FULLY INSURED

FROM PRIVATE
INDIVIDUALS TO
MANAGEMENT
COMPANIES



TRUSTED
LOCAL BUSINESSES ✓

MOWING MACHINE GARDENERS

For a no-obligation free estimate please call

01342 529365 or 07771 922281

www.themowingmachine.co.uk

DPC

Groundworks Ltd

Contact: David Bridges

info.dpcgroundworks@gmail.com

Instagram : [dpcgroundworks](https://www.instagram.com/dpcgroundworks)

Fully insured
Private and commercial
General maintenance
Drainage and Klargesters
Utility services
Earthworks and machine hire
Concrete surfaces
Paving
Swimming pools
Extensions
General building

07969 661014

01342 843883

07711 478890

PART P CERTIFIED
NICEIC APPROVED



Fusilier

Electrical Limited

Contact Pat or Adam Carter
info@fusilierelectrical.co.uk

www.fusilierelectrical.co.uk

OUTWOOD HORTICULTURAL SOCIETY

OHS SUMMER SHOW - SATURDAY 4TH SEPTEMBER 2021

A Huge Thank you to everyone who entered and attended the Show!!
What a wonderful village occasion and how gracious of Dame Judi
to award our cups!!

WINNERS 2021

VICTOR CONSTABLE CUP
HAREWOOD'S CUP
IVOR PAUL CUP
SOCIETY'S CUP
WENDY GORDON CUP
CORONATION CUP
HALL CUP
CHILDREN'S CUP
THE SPUD TROPHY
CHAIRMAN'S CUP
FRANK WITT'S MEMORIAL CUP
GEOFF LE SERVE CUP
SUNFLOWER SHIELD
THE HANDICRAFT PLATE

LINDA LODGE
LINDA LODGE
SUE MCINTOSH
JANET HALL
LINDA LODGE
LINDA LODGE
MASON RICHARDS
TOBY BULL
NICK CASE-GREEN (8lb 8oz)
JANET HALL
LINDA LODGE
MAGGIE JUDD
MASON RICHARDS (12' 10")
MAGGIE JUDD

DATE FOR THE DIARY - AGM
FRIDAY 19TH NOVEMBER 6.30PM
FOLLOWED BY

PIE & MASH SUPPER



LLOYD HALL

7.30PM

ALL WELCOME



TICKETS £10.00 MEMBERS / £11.00 NON MEMBERS

RAFFLE/QUIZ AND INFORMAL SEED SWAP

PLEASE BRING YOUR OWN DRINKS & GLASSES

PAUL RICHARDS UPHOLSTERY

All aspects of Upholstery
and Re-Upholstery undertaken

Fabrics and Foams Available

Quality you CAN Afford

Traditional Workmanship by a Skilled Craftsman



All Upholstery Carried Out In Our Own Workshops

20 Years Experience

*From Chairs to Chaise, Seats to Settees
Portfolio Available*

Free Estimates and Advice

Trindles Farm, Plough Road, Smallfield, RH6 9JN

Phone/Fax: 01342 619277

Mobile: 07949 510877

Paul.Richards.upholstery@gmail.com

CHRIS ANDREWS GARDEN MAINTENANCE

CITY & GUILDS HORTICULTURE

GRASS CUTTING,

HEDGE CUTTING,

TREE & SHRUB PRUNING,

BEDS & BORDERS WEEDED

& MAINTAINED, PLANTING,

GENERAL CLEARING & TIDYING

ESTABLISHED 20 YEARS

REFERENCES AND PHOTOS AVAILABLE

CALL CHRIS

TEL. 01342 841583

MOB. 07810 748852

4 WHITEWOOD COTTAGES, WHITEWOOD LANE,
HORNE, RH9 8JR

L.A. ROWE

PLUMBING & HEATING

Tel: 01342 844 600

Mob: 07801 531 423

Working locally for 17 years

Bathrooms • Showers

Kitchens • Boilers

Central Heating

Gas Installation

Guttering & Leadwork



reg. number
028229W



164781



Gayton Veterinary Group

www.gayton.co.uk



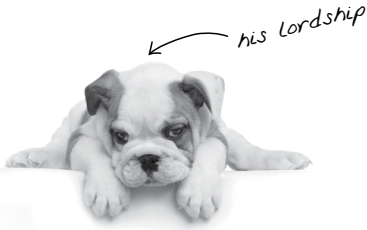
Consultations Monday to Saturday
9am - 7pm

24 hour care at our Redhill surgery
by our own team of vets and nurses.

Gayton House,
40 Hatchlands Road,
Redhill, Surrey RH1 6AT
01737 761475

7 South Parade,
Horley Row,
Horley, Surrey RH6 8BH
01293 771560

Treating Your Pets Like Royalty



Crown Vet Clinic

1 The High Street
Nutfield, Redhill,
Surrey RH1 4HH
crownvets.com
t: 01737 822250

Opening times:
Monday - Friday
8.30am - 6.30pm
Saturday
9am - 11.30am

Miss Nicola Williams
Mr Michael Taylor

Consultation by
appointment



**NOT JUST
TRAVEL**

Sally Bosman

Your friendly, local travel expert!

If you can dream it ...
I can book it!

P: 01737 789355
M: 07498 209658
E: sally.bosman@notjusttravel.com
W: <https://sallybosman.notjusttravel.com>



FARM SHOP OPEN

EVERY SATURDAY 10AM - 2PM

100% PASTURE FED BEEF & PASTURE RAISED EGGS

WWW.BRIGHTLEIGHFARM.CO.UK

MILLERS LANE, OUTWOOD, SURREY, RH1 5PY

✉ INFO@BRIGHTLEIGHFARM.CO.UK ☎ 07775 924 141



NEWS FROM CLAIRE COUTINHO MP

After a year and a half of virtual meetings, it's been amazing to be out and about over the summer months. It's really felt like going back to the normal role of a local MP.

Last week I attended the opening of the new café in the Horley Recreation Ground. Thanks to Horley Town Council, Ed and Debbie for a wonderful afternoon. Later in the day I went to a Whyteleafe Village Council meeting and enjoyed hearing from residents their ideas to improve the local community. Thanks to Deano and Marcus from the Village Council for organising.

In lieu of their annual fair, I also had the pleasure of visiting Limpsfield Chart's street party recently. Thank you so much to Dr Diana Davy CBE for all her efforts to put on this amazing community event. I got to see Titsey Rotary Club's unrideable horse in action and buy some lovely honey from one of the stalls.

Another highlight from the past month was visiting the orchard in Woldingham for some hay raking. It was wonderful to see the community garden that Ann Richardson and team have set up next to the Glebe. It was also brilliant to hear about the community work Janine Battersby and others are doing there.

If there's anywhere you think I should visit in the next month, please do get in touch with me at claire.coutinho.mp@parliament.uk and I'll get back to you as soon as I can.

Now that we're allowed visitors in Parliament again, if you're a resident of East Surrey I'd be delighted to welcome you to Westminster for a tour of the Palace of Westminster. It's full of fascinating information about how our parliamentary system works, the history of the palace, and what it's like to work here day-to-day. You'll be able to see the House of Commons, House of Lords, Westminster Hall, the Queen's Robing Room, and more. You can register your interest on my website at clairecoutinho.com.

Many of you will know that one of my key priorities as your local MP is protecting and enhancing our environment. That's why I was so excited to bring back my Greentember campaign again this year. One of the main reasons I launched the campaign - a whole month of pushing for environmental progress - was to help identify the changes we can all make in our day-to-day lives to help the environment.

And this year my three main Greentember pledges are: shopping for only second-hand clothes, using a greener mode of transport than my normal routine, and reducing my food waste by keeping a food waste diary, reducing overbuying, and saving leftovers as much as possible.

In late October I'll also be hosting Surrey's very own COP summit to raise awareness of the COP26 meeting in Glasgow, increase engagement with the conference at a local level, and give all of you an opportunity to have your voices heard.

Over recent weeks, many of you have also got in touch with me with your concerns about the changes Govia Thameslink Railway (GTR) have recently made to their timetables, especially with respect to services between East Grinstead and London Bridge.

Finally, I know that we were all deeply moved by the horrors that unfolded in Afghanistan. The situation was - and remains - tragic beyond words. From the very beginning, my focus was on helping constituents who had family on the ground in Afghanistan. I was so pleased - and relieved - that we were able to help one constituent, a former interpreter now living here in Surrey, to bring his wife and three children from Afghanistan over here to safety.

My focus remains on assisting several other local families to bring their loved ones to safety, and I am continuing to speak to Ministers every day to help make that happen. If you know anyone who is in a similar situation, please ask them to email me and I'll do everything in my power to help.

FUNERAL PLANS FROM

ALEX  **JONES**

Independent Family Funeral Directors

One of the few remaining family-owned, truly independent funeral directors in the area

Peace of mind for you and your family



Specify your wishes in advance



Protection against rising funeral costs



A range of flexible payment options



Arrange the send off you want

Alex Jones Funeral Directors

1 East Grinstead Road

Lingfield

RH7 6EP

01342 832534

www.alexjonesfuneraldirectors.co.uk

**£40 M&S
vouchers
with every
plan**

We also have funeral homes in;

Forest Row: 01342 822399

Oxted: 01883 730383

Edenbridge: 01732 860047



PROUD TO OFFER
**Golden
Charter** 

Vouchers distributed 30 days after your plan is taken out - contact us for full details.

WANT TO ADVERTISE IN OUTWOOD NEWS?

This space is just £80 p.a.
- only £8 per edition!

For more information
and to check availability

please contact

John Mankelov:

01342 842764

or

Anne Morle:

01342 843336

anne.morle@outwood.org

Great value holidays!

I can arrange...

Flights • Package Holidays • Hotels
Tours • Tailor made itineraries • Last minute
availability • Weddings & Honeymoons

For expert advice and assistance,
call Donna today!

travel-pa.com

Donna Rowe

0800 954 5216 • 07801 342309

donnar@travel-pa.com

www.travel-pa.com/donnar

ABTA
57032 / V0404



Building and Electrical Services NICEIC Certified, Trading Standards and 'Which' Approved

Extensions, Improvements, Remodelling

Electrical Installation, Inspection, Testing and Certification to
Domestic, Commercial and Industrial Part P compliant.

Find me on 'Trading Standards' and 'Which Trusted Traders' websites
where **reputation** and **reliability** matters.

Contact **Chris Yeldham** in **Outwood**

01342 844642 - 07801 519789 chris@yeloshield.co.uk

www.yeloshield.co.uk

The
BELL INN



Nick, our lovely team and I would like to thank you all for your amazing support through the “Ups and Downs” over this last year or so that we’ve all experienced.

Since taking over the business from Fuller’s, we have not only been welcomed to Outwood but have developed many genuine friendships within this lovely village.

The Bell Inn simply wouldn’t have survived without you all and, for this, we thank you very much.

Let’s all hope that normality, in whatever form, isn’t too far away.

We wish everyone well and, as always, we look forward to welcoming you to The Bell.

It wouldn’t be the same without you!

Very best, Steve

Phone: 01342 891835
www.belloutwood.co.uk

OUTWOOD NEWS COPY DATES

ISSUE

COPY DATE

November	18th October
December & January 2022	12th November
February	14th January 2022
March	11th February
April	18th March
May	15th April
June	13th May
July	17th June
August & September	15th July

NOTE: Please submit copy either as finished artwork (a PDF of the correct size) or, if using WORD, in the simplest form. Please avoid using text boxes.

CONTENTS

	<i>Page</i>
CHRISTMAS TREE FESTIVAL	5
CHURCH NEWS	4 & 5
CHURCH SERVICES	19
CONTACT DETAILS	17
DIARY	20
LLOYD HALL	21
LLOYD HALL AFTERNOON TEA	15
NATURE WATCH	11
OUTWOOD BRITISH LEGION	7
OUTWOOD ADVENT WINDOWS	7
OUTWOOD HORT. SOC.	23
OUTWOOD VILLAGE SHOW 2021	3
PARISH COUNCIL	16 & 17
POLICE & CRIME COMMISSIONER	18
PUBLIC TRANSPORT	18
SHOESTRING PRODUCTIONS	21
SPEEDWATCH	18
ST. CATHERINE'S HOSPICE	15
W.I.	9



AWARD WINNING OUTDOOR SPACES
www.we-love-plants.co.uk
 01883 744 020



REPUTATION FOR TOP QUALITY ROOFING



FOLAN & JOHNSON
ROOFING SPECIALISTS

Established in 1988



Traditional Roofing • Slating • Leadworks • Three Layer Flat Roofing • Horsham Stone • Velux Windows



- Handmade Clay Peg Tiles • 3 Layer Felt Flat Roofing • Traditional & Contemporary Tiling
- Natural Slate • All Aspects of Leadwork to BS1178 • CSCS Compliant

Tel: 01293 784304 • Mob: 07768 695616 • info@folanandjohnson.co.uk • www.folanandjohnson.co.uk

Free estimates
& fully insured



PAC handyman
services

PAC Handyman Services is your local solution to everyday building, maintenance and installation projects within the home and garden.



Tel: 01342 843348 | 07711 939370 | www.pac-handyman.co.uk



**Home
Instead**
SENIOR CARE®
To us, it's personal.

The best home
to be in is
your own

Having Home Instead Senior Care help me around the house means I don't have to go anywhere.

Stanley T
— Stanley T.
Client

COMPANIONSHIP | MEALS AND NUTRITION
PERSONAL CARE | MEMORY CARE

If, like Stanley, you would like to remain in your own home, we can help.

homeinstead.co.uk/reigate
or call 01737 529 793

Each Home Instead Senior Care® franchise office is independently owned and operated. Copyright © Home Instead Senior Care 2019.